

# Glidermatic GTS Optima

## Programming New or Additional Handsets

The following instructions demonstrate how to program a new or additional Gliderol handset to suit your existing Glidermatic GTS Optima garage door operator. Please note, if you are replacing a lost or stolen handset we recommend erasing all existing handset data from your operator prior to programming your new handset. To erase all handsets from the memory, hold down the receiver button (shown in step 2) for 15 seconds. Any other handsets previously used will need to be reprogrammed.

### IMPORTANT - READ BEFORE PROCEEDING

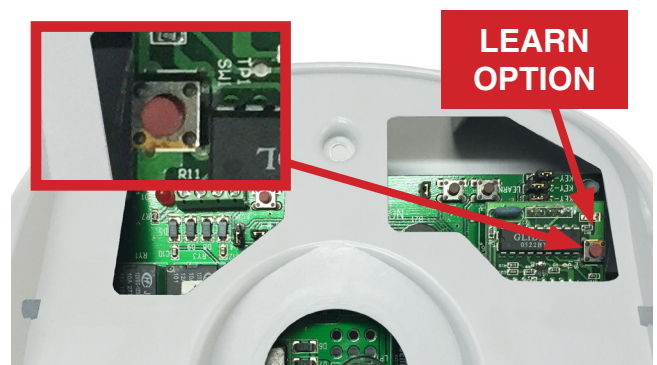
Your 'learn' button will be located in one of the two positions shown, depending on the age of your unit. If your circuit board has a second, smaller board attached, you must use the 'Position One' instructions.

#### Step 1:



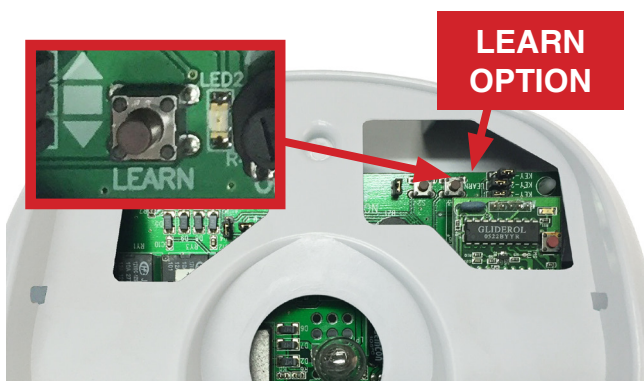
Carefully remove the light cover by pulling down on the tab near the front of the unit.

#### Step 2 (Position One):



Press the red button once. A red light will illuminate to confirm the unit is in learn mode.

#### Step 2 (Position Two):



Press the 'Learn' button once. A red light will illuminate to confirm the unit is in learn mode.

**Note:** If your circuit board has a second, smaller board attached, you must use the 'Position One' instructions.

#### Step 3:



Press the top button on your handset once and then wait until the red light on the receiver board turns off.

**Your handset programming is now complete!**